



Open Mon-Fri 7am to 10pm
 5015 Enterprise Blvd Toledo, OH 43612
 419-729-7010 F# 419-729-7019
www.toledospring.com

As of June 16, 2019

Monroe Shocks



tag axle shock M646177 6 for \$ 63.00 ea.

- 65416 8 for \$ 51.54 ea.
- 66636 8 for \$ 32.94 ea.
- 66634 8 for \$ 32.15 ea.
- 65101 4 for \$ 49.74 ea.
- 65159 4 for \$ 53.14 ea.

Brake Chambers made in USA



3030 2 year warranty 6 for \$ 38.82ea.
 20 for \$ 35.84 ea.

3030HD 4 year warranty 4 for \$ 55.93ea.
 3030lsx long stroke 2 year 4 for \$ 50.62ea.

Piggy backs 3030pk
 6= \$ 36.18 ea.
 20= \$ 33.40 ea.

3030kls-HDAheavyduty piggyback long stroke
 4= \$ 48.29 ea.

Note: all prices subject to change,
 Parts numbers are a reference

**Meritor HDATruckPride
 private label NEW shoe kit**



- 4707Q 20K highway 8=\$47.89 ea.
- QHV20 32=\$44.31 ea.
- 4707Q 23K highway 8=\$61.305 ea.
- QHV23 32=\$56.70 ea.
- 4707QH23S lots of stop and go
 8=\$ 66.74 ea.
- 4707QH23S garbage truck
 8=\$ 77.28 ea.

SLACK ADJUSTER Made in USA



\$ 5 ea. with 6 of part #
 801073 Meritor 1-1/2-28-5.5
 801074 Meritor1-1/2-28-6.0
 1140 Gunitite 1-1/2-28-5.5
 1141 Gunitite 1-1/2-28-6.0
 10211HDA Haldex 1-1/2-28-5.5
 10212HDA Haldex 1-1/2-28-6 straight

STEMCO

6 year million mile warranty for highway use.



\$ ea. with 6 of part #
 MK42100s 1-1/2-28-5.5"
 MK42106s 1-1/2-28-6.0"





Open Mon-Fri 7am to 10pm
 5015 Enterprise Blvd Toledo, OH 43612
 419-729-7010 F# 419-729-7019

www.toledospring.com

Aftermarket NEW Air Dryers



- AD9 065225 2=\$ 147.71 ea.
4=\$ 136.24 ea.
- ADIP 065612 2=\$ 19 .41 ea.
- ADIS 5010134 2=\$ 241.77 ea.
- ADSP 065691 2=\$ 258.48 ea.
- Wabco 955205 2=\$ 155.03 ea.
- Wabco SS1200P 2=\$ 177.16 ea.

Air Dryer Cartridges

- 950068 coalescing 2=\$ 53.50 ea.
6=\$ 51.11 ea.
- ADIS 5008414 2=\$ 31.19 ea.
- ADIP 109493 2=\$ 85.44 ea.
- AD9 kit 107796 2=\$ 29.54 ea.

Air Disc Brake Pads



- Bendix ADB22 1369H 4=\$ 89.93ea
- Wabco pan19 1438H 2=\$100.38ea
- Wabco pan17 1518H 2=\$104.41ea
- Wabco pan22 1777H 2=\$107.69ea
- Meritor **Mach** program

AIR VALVES



- 229859 QR valve 3/8 3=\$ ea.
- 229860 QR valve 1/2 2=\$ ea.
- 102626 R12 RELAY 2=\$ ea.
- KN31000 PR4 2=\$ 1 ea.
- 275491 D2 GOV 3=\$ 11.73 ea.

Meritor Wabco replacement ABS trailer valve



- S4008506020 2= \$ 118.065 ea.
- S4005001010 2= \$ 337.86 ea.
- S4005001030 2= \$ 528.10 ea.
- S4461082060 2= \$ 304.07 ea.

ABS SENSOR replacement



- S4497130180 2=\$ 9.29 ea. 801544 2=\$ 2 ea.
- 801545 2=\$ ea. 801546 2=\$ ea.
- R955329 2=\$ ea. R955336 2=\$ 2 . ea.
- R955337 2=\$. R955341 2=\$ ea.
- R955342 2=\$ 1 ea. R955349 2=\$ ea.

Where ever the road takes you, we are there!



Toledo Spring Parts & Service : Serving You Since "32"

TOLEDO SPRING

PARTS & SERVICE

Open Mon-Fri 7am to 10pm
 5015 Enterprise Blvd Toledo, OH 43612
 419-729-7010 F# 419-729-7019

www.toledospring.com



NEW 39 MT 11t rotating nose
 8200308 6924N 2=\$ 222.25 ea.

NEW 42MT 11t rotating nose
 Many Delco numbers
 10461052 6356N 2=\$ 232.74



NEW 24SI 160 amp 100 at idle
 8600310 j-mount 8718 2=\$1 ea.
 8600889 pad mount 8719 2=\$137.76ea.

Call for pricing anytime between 7am and 10pm M-F
 for 28SI, 35Si, 36SI and 40SI all in stock one at a time.
 Over 50 different units in stock 12 and 24Volt,

NEW WATER PUMPS no core



EA4722000401 Detroit diesel DD13 & DD15 US0401 2 = \$ 78.21 ea.
 85142304 85124621 D11,D13,D16 US2304 2= \$ 117.84
 ISX 4089910 368449 US6344 2=\$ 294.00 ea.

Note: all prices subject to change, all prices shown as each. Part numbers are a reference.

TIMKEN bearing sets



FFTC1 Set427/428w/spacer 2=\$10

FFTC2 Set603/605w/spacer 2=\$1

FLTC1 Set445/446w/spacer 2=\$

SET401 580/572 4=\$ ea.

SET402 582-572 4=\$ 4 ea.

SET403 594A/592A 4=\$ 4 ea.

SET406 3782/3720 4=\$ 2 ea.

SET413 049/011 4=\$ 3 ea.

8=\$ ea.

SET414 248/210 4=\$ 4 ea.

8=\$ 4 ea.

SET415 445/410 4=\$ 5 ea.

8=\$5 ea.

SET423 6461a/6420 4=\$10 ea.

SET424 5558/552a 4=\$ 5 ea.

SET425 567/563 4=\$ ea.

SET426 47679/47620 4=\$5 ea.



Stemco seals

383-0136 6=\$ 29.80 ea.

393-0173 6=\$ 39.96 ea.

373-0143 6=\$ 28.67 ea.

383-0164 6=\$ 39.41 ea.

373-0123 6=\$ 28.81 ea.

372-7097 6=\$ 32.44 ea.

392-9131 6=\$ 42.06 ea.

382-8036 6=\$ 34.90 ea.

393-0112 6=\$ 36.22 ea.

Where ever the road takes you, we are there!



Toledo Spring Parts & Service : Serving You Since "32"



Open Mon-Fri 7am to 10pm
 5015 Enterprise Blvd Toledo, OH 43612
 419-729-7010 F# 419-729-7019

www.toledospring.com

Note: all prices subject to change, all prices shown as each. Part numbers are a reference.

Stemco Hub Cap

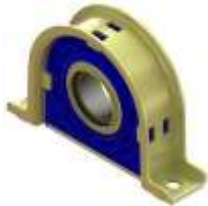


- 300-4009 hub cap 6=\$ 9.09 ea.
25=\$ 8.07 ea.
- 300-4024 hub cap 6=\$ 16.30 ea.
- 340-4195 hub cap 6=\$ 22.98 ea.
- 359-5990 plug 10=\$ 2.91 ea.
- 359-5915 red plug 10=\$ 2.91 ea.



Stemco Pro-torq spindle nut

- 447-4723 4=\$ 45.09 ea.
- 447-4743 4=\$ 35.46 ea.
- 448-4836 4=\$ 33.18 ea.
- 448-4837 4=\$ 33.57 ea.
- 448-4839 4=\$ 37.64 ea.
- 448-4865 4=\$ 39.11 ea.
- 449-4904 4=\$ 39.98 ea.
- 449-4973 4=\$ 39.31 ea.
- 449-4975 4=\$ 39.31 ea.



Center support Carrier bearing

- Timken OEM rubber
- #1 seller 210661x 500332 HB88512AHD 2= \$ 6 ea.
- ATRO polyurethane 210661x 500332
- CR00-67825 2=\$ 71.25 ea.
- GAFF Easy mount polyurethane 40197 2= \$ 70.52 ea.



Tramec Sloan **top of the line** power and air lines made in USA

- 451204 12' 3= \$ 124.35
- 451275 13.5' 3= \$ 132.10
- 451205 15' 3= \$ 139.75

Imported # 179.3012.12 3= \$128.48 ea.



GROTE air lines

- 40F to 220F** premium
- 81-0015 15' w/12" leads 3=\$ 3 ea.
- 81-0015-40 w/40"lead 3=\$ 34.46 ea.



- Tramec Sloan Maxxgrip Gladhands
- Drivers love them, easy to grip and less issues with airlines.
- 441242 Blue 3 = \$ 10.51 ea.
- 441243 Red 3 = \$ 10.51 ea.



- Traditional glad hand by Grote
- 81-0001-B Blue 3 = \$ 3.59 ea.
- 81-0001-R Red 3= \$ 3.59 ea.

Where ever the road takes you, we are there!



Toledo Spring Parts & Service : Serving You Since "32"

TOLEDO SPRING

PARTS & SERVICE

Open Mon-Fri 7am to 10pm
 5015 Enterprise Blvd Toledo, OH 43612
 419-729-7010 F# 419-729-7019

www.toledospring.com

Note: all prices subject to change,
 Parts numbers are a reference



Drain w/cable 032082, 401046, 177.4010 # 12-5300
 4=\$ ea.



Flanged cap nut E6000A, W1338, 179933, M-3203,
 W498, K169187, R006000A, 50004718611, 1617829C1,
 106333, WN6000, 333B,
 # 201.3014 40= \$ 1.37 ea.
 120= \$ 1.19 ea.



Stemco Kaiser No Ream King Pins

The 70's kits are a brass no ream bushing that needs to be pressed in, the K kit is a spiral bushing, listed are the same application

Brass bushing		Spiral bushing	
70.122.05	\$ 259.30	K122E	\$ 339.93
70.147.05	\$ 209.93	K147E	\$ 424.32
70.931.12	\$ 190.96	K931L	\$ 366.65
78.931.12	\$ 298.81	KH931L	\$ 440.54
70.961.12	\$ 223.31	K961L	\$ 380.43
70.120.09	\$ 291.34	K120H	\$ 310.38
70.616.13	\$ 253.90	K616M	\$ 323.14



ConMet 3 year warranty complete hubs #10082201 Front preset Alum hub alum wheels w bearings HM21011/049 & 3720/822=\$ 244.88



Deka East Penn group 31

No warranties in the last 8 years

VL31 650cca 6=\$ 73.04 ea.
 1131MF 950cca 6=\$ 89.82 ea.
 DP31CS deep cycle 6=\$ 94.73 ea.



Grote

82-1000 junction box 3=\$.
 82-1001 trailer plug 3=\$6.80 ea.
 82-1002 splitpin sckt 3=\$ ea.
 82-1019 tra/plug w/guard 3=\$7.25ea.

Grote Zip ties



83-6019 7.6" 50lbs 00=\$.0
 83-6021 11" 50lbs 00=\$.04 7 ea.
 83-6025 14.6" 50lbs 00=\$.0 ea.
 83-6029 15"120lbs 500= \$.1025 ea.

Where ever the road takes you, we are there!



Toledo Spring Parts & Service : Serving You Since "32"

TOLEDO SPRING

PARTS & SERVICE

Open Mon-Fri 7am to 10pm
 5015 Enterprise Blvd Toledo, OH 43612
 419-729-7010 F# 419-729-7019

www.toledospring.com



83-7029 electrical **10=\$1.47ea.**

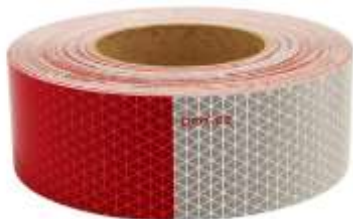


Grote Master disconnect switch
 82-2103 **3=\$ 23.32 ea.**



4" stop tail turn LED lights
 Grote G4002 **10=\$ 15.29 ea.**
 52922 reg 4" **10=\$ 3.27 ea.**

Maxxima M42346R 4" round 6 LED
10=\$ 8.08 ea.
30=\$ 7.00 ea.



Orafol/ Reflexight 7"white/11"red 150'
 19160 3 year **2=\$ 53.79**
 18806 5 year **2=\$ 66.70**
 18379 2"x12" solid white **100=\$.49 ea.**



Energizer Industrial

EN22 9V	24=\$ 1.80 ea.
EN91 AA	48=\$.45 ea.
EN92 AAA	48=\$.45 ea.
EN93 C's	24=\$.87 ea.
EN95 D's	24=\$ 1.36 ea.

Note: all prices subject to change,
 Parts numbers are a reference



Trailer springs

TRA013	4= \$ 75.06 ea.
TRA035	4= \$ 62.94
TRA038	4= \$ 76.60
TRA699	4= \$ 91.22
TRA2726	4= \$ 68.92
TRA2727	4= \$ 68.92
TRA2728	4= \$ 68.92



Tarps strap box of 50 prices by ea.

9"	\$.61
15"	\$.75
21"	\$.79
31"	\$ 1.14
15"epdm	\$.87

TOLEDO SPRING PARTS & SERVICE

Open Mon-Fri 7am to 10pm
5015 Enterprise Blvd Toledo, OH 43612
419-729-7010 F# 419-729-7019

www.toledospring.com



All steel frame blade ss rivets
16" to 24" 10= \$ 2.43 ea.



All season blades
91221 22" 10= \$ 6.96 ea.
91241 24" 10= \$ 6.96 ea.

Winter blades
76221 22" 10= \$ 5.15 ea.



Grote G3002 2"rd LED 6=\$ 5.83ea.

G3003 yellow \$\$ same as above

Grote G1032 2-1/2 LED 6=\$5.77ea.

G1033 yellow same \$\$ as above



M50911 straight 50=\$1.24 ea.
M50900 right angle 90 50=\$ 1.38 ea.

Note: all prices subject to change,
Parts numbers are a reference



Eiko

9004	4=\$ 2.36 ea.
9005	4=\$ 2.29 ea.
9005XSLL	4=\$ 6.76 ea.
9006	4=\$ 2.29 ea.
9006XSLL	4=\$ 6.76 ea.
9007	4=\$ 3.10 ea.
H1155-BP	4=\$ 6.24 ea.
H4651	4=\$ 8.56 ea.
H4656	4=\$ 7.29 ea.
H5006	4=\$ 8.65 ea.
H6024	4=\$ 10.47 ea.
H6054	4=\$ 8.65 ea.
H9411	4=\$ 15.33 ea.



DOT Inspection for 1-CPS 100=\$.43ea.
Annual label 1-CSP 100=\$.69 ea.



PB Blaster Air & Tool cond & lube
16-ATC 6=\$ 4.35ea.
Air tool lube 6=\$ 3.92 ea.
Garage door lube 16-GDL 6=\$ 3.89
PB Blaster 16-PB 12=\$ 4.35 ea
24=\$ 3.92 ea.

TOLEDO SPRING PARTS & SERVICE

Open Mon-Fri 7am to 10pm
5015 Enterprise Blvd Toledo, OH 43612
419-729-7010 F# 419-729-7019

www.toledospring.com



Penray Brake Clean

Non-chlorinated 14oz 4620 36=\$ 2.97 ea.

60=\$ 2.76 ea.

#4820 chlorinated 36=\$ 4.27 ea.

60=\$ 3.99 ea.



Shark made in USA roloc disc

3" course brown

13006 30=\$ 1.84 ea.

3" medium burgundy # 13020 50=\$ 1.32 ea.

2" course brown 13062 50=\$.72 ea.



6" cut off wheel type 1 7/8 ar

13031 2=\$ 53.34 ea.

3" 54gr 1/16 3/8 #13215

50=\$ 1.32ea

100= \$ 1.23 ea.

3" 54gr 1/32 3/8 # 13216

50=\$ 1.32 ea. 100=\$ 1.23 ea

Note: all prices subject to change,
Parts numbers are a reference



Torca 4"

E40ST 10=\$ 7.06ea.

E50ST 10=\$ 7.45 ea.



Nitrile gloves seav900pf

Large 10=\$ 5.93 ea.

XL 10=\$ 6.25 ea.



Permatex products

5th wheel lub #01010 60=\$.90 ea.

Xtreme laundry soap #22340 2=\$13.97

Fast orange 1gal 23218 4=\$12.95

Ultra black max 24105 6=\$15.35

Medium strnth thre 24240 2=\$19.48

Spray nine 26825 2=\$4.27 ea.

Nickel anti-seize 77124 3=\$20.42ea.

Anti-seize 80078 2=\$6.76 ea.

Spray lube 80070 2=\$3.69

Thread sealant 80631 2=\$3.19

" " 80632 12=\$5.43ea.

Dielectric 81150 6=\$2.65 ea.

Black RTV 81158 6=2.99 ea.

Blk rtv tube 81173 12=\$10.63ea

Hi temp red 81160 12=\$4.05

Ultra grey rigid 82195 6=\$15.91

85080 ultrablck power 6=\$19.33ea

TOLEDO SPRING

PARTS & SERVICE

Open Mon-Fri 7am to 10pm
5015 Enterprise Blvd Toledo, OH 43612
419-729-7010 F# 419-729-7019

www.toledospring.com



The part number is stamped on the bag!

Order 4 or more air springs to get these prices.

The L stands for long life 3 years warranty

452-1191L = 1R12-432, 9875	\$ 107.62
452-5423L = 8559	\$ 119.22
452-8050L = 1R14-039, 8320	\$ 116.50
452-8709L = 1R13-159, 8453	\$ 96.70
452-8774L = 1R14-172, 8745	\$ 136.34
452-9069L = 1R12-069, 8312	\$ 85.18
452-9265L = 1R12-375, 8435, S20124	\$ 105.47
452-9367L = 1R12-256, 8505	\$ 120.68
452-9375L = 1R12-404, 8451	\$ 122.32
452-9781L = 1R12-603, 8382	\$ 107.73
455-46647L = 1R12-647, 81153	\$ 114.47
454-8033L = 3B13-312, 4525	\$ 108.05
454-6897L = 2B9-229, 4505	\$ 73.50

Intraax camshaft hardware kit 16-1/2" HSX

OE design w/nylon bushing # 110.2505 =
S26348, S28890, R615025, E11897 B8805
6 = \$ 22.64 ea.

HD with bronze bushings for longer wear
110.2505HD
6 = \$ 29.61 ea.

XHD Longer sintered metal bushings for wider bearing surface and knurled cam tube ends for better grip on worn spiders,
110.2505XHD
6 = \$ 33.08 ea.



Holset Cummins ISX,
HE561VE Complete 15.0L
2007-2013,

Remanufactured Turbocharger
#RHH3767618

2= \$ 3105.89 exch.

New actuator 4034289hx

2= \$ 1275.65 exch.



Horton 9908503
Klondike 30 New
Clutch Head

Rear Air Klondike,
Kysor/BorgWarner
Fan Clutch. Ford,
IH/Navistar, Volvo,
Mack, Freightliner,

Western Star.

Buy 2 = \$ 335.95 ea.



Open Mon-Fri 7am to 10pm
 5015 Enterprise Blvd Toledo, OH 43612
 419-729-7010 F# 419-729-7019

www.toledospring.com

Note: all prices subject to change,
 Parts numbers are a reference



Stemco quicktube & ends

QT967SS 12k axles w/es423R/L, 310-222/223,
 E4615/14 2=\$ 199.51

QT108SB 16 & 20K axles w/ES431R/R,
 E4617/18, 310-229/228 2=\$ 207.48

Tie Rods only

ES423R/L, 310-222/223, E4615/14 2=\$28.16

ES431R/R, E4617/18, 310-229/228 2=\$39.91

Tramec Sloan Made in OHIO Brass



S62PMT-4	1/4	10=\$4.84	20=\$4.57
S62PMT-6	3/8	10=\$5.84	20=\$5.54
S62PMT-8	1/2	10=7.21	20=\$6.81



S762AB-4	1/4	10=\$2.06	20=\$1.95
S762AB-6	3/8	10=\$2.51	20=\$2.41
S762AB-8	1/2	10=\$4.42	20=\$4.18



S768AB-4-2	T-1/4 P-1/8	10=\$1.38	
		20=\$1.31	
S768AB-4-4	T-1/4 P-1/4	10=\$1.73	
		20=\$1.63	
S768AB-4-6	T-1/4 P-3/8	10=\$2.42	
		20=\$2.29	



S768AB-6-4	T-3/8 P-1/4	10=\$1.67	
		20=\$1.58	
S768AB-6-6	T-3/8 P-3/8	10=\$2.06	
		20=\$1.95	

S769ab-4-2	T-1/4 P-1-8	10=\$1.74	
		20=\$1.65	
S769AB-4-4	T-1/4 P-1/4	10=\$2.31	
		20=\$2.18	
S769AB-4-6	T-1/4 P-3/8	10=\$3.47	
		20=\$3.28	
S769AB-6-4	T-3/8 P-1/4	10=\$2.55	
		20=\$2.41	
S769AB-6-6	T-3/8 P-3/8	10=\$2.99	
		20=\$2.83	



LUBERFINER	Baldwin	FLEETGUARD
LFP3236	B7225	LF3973 \$ 7.04*
LP5090A	DD13& 15	A4721800109 \$ 18.06*
LFF8059	BF7814	FF5507 \$ 10.55 *
LFP8642	B7577	LF3410 \$ 13.07*
CAF24003	PA4857	A26235 \$ 10.07*
CAF24000	PA4681	AF26405\$ 8.67*
LFP3191	B76	LF3321 \$ 5.64*
LFP3191XL	B76MPG	LF9667 \$ 15.99*
L9765FXL	PF7930	FS19765 \$ 13.39*
LFP4005	B91	LF691A \$ 9.57*
LFF2749	BF7587	FF5319 \$ 8.15*
LFF1000	BF1259	FS1000 \$ 9.25*

Where ever the road takes you, we are there!



Toledo Spring Parts & Service : Serving You Since "32"

TOLEDO SPRING

PARTS & SERVICE

Open Mon-Fri 7am to 10pm
 5015 Enterprise Blvd Toledo, OH 43612
 419-729-7010 F# 419-729-7019

www.toledospring.com

LP5005	P528	LF637 \$ 8.26*
L5104F	PF9908KIT	P551063 \$ 56.57*
LFW4071	BW5071	WF2023 \$ 6.71*
LFP2160	B495	LF3620 \$ 8.83*
LFP2160XL	B495-SS	LF9620 \$ 19.82*
LFF5488	BF7815	FF5488 \$ 7.53*
LFF5002	BF7557B	FF105C \$ 5.40*
LFF3349	BF7629	FF5269 \$ 6.46*
L9915F	PF9804	FS19915 \$ 34.92*
L5467FNXL	PF7748	FH23027 \$ 10.22*
LFP219F	BF877	FF172 \$ 5.95*
L3578FN	PF7680 +M#	FS5369W \$ 5.25*
LFF1022	BF1272-SP	FS1003 \$ 13.79*
LFP3000	BD103	LF3000 \$ 17.75*
LFF4470	BF7656	FF5381 \$ 7.63*
L5091F	PF9806KIT	FK4855 \$ 56.97*
L5467F	PF7748	FS19624 \$ 9.89*
LFF3476	PF7773	FF5382 \$ 8.35*
LFF5823B	BF614	FF5264 \$ 7.80*

*must be signed up as a Luberfiner stocking account

This is a 25 to 35% extra discount. As your salesperson how to get this program!

Note: all prices subject to change,
 Parts numbers are a reference



FC 10 Fire extinguisher 2.75lb BC auto
 #440106MTLK
 4=\$ 19.50 ea.

FC340M Fire extinguisher 5lb ABC auto 466425K
 3=\$ 46.51 ea.



21 LED Red Stainless Steel Light ID Bar
 # M20343R 2=\$ 23.17ea.



Maxxima M20383YCL Amber 3 LED Ultra Thin
 Low Profile Warning Light 6=\$34.72 ea.



Maxxima M20389YWCL-DC Thin Low Profile
 Dual Color LED Warning Light Amber/White
 Clear Lens
 6=\$65.00 ea.



Maxxima
 MEP-81000WL 8-
 Outlet Workshop
 Power Center
 comes with 8
 120VAC outlets,
 Dual USB charging
 ports and two 500 Lumen LED shop lights. 2=\$56.33
 each.



Maxxima M63353WYCL
 14 LEDs Oval
 White/Amber 6.5"
 Emergency Warning
 Surface Mount 11
 Selectable Flash Patterns
 6=\$ 39.22 ea.



THOUSANDS of OEM parts are available. If you use enough we will stock them for you, already in stock are hundreds of items.

Where ever the road takes you, we are there!



Toledo Spring Parts & Service : Serving You Since "32"

TOLEDO SPRING

PARTS & SERVICE

Open Mon-Fri 7am to 10pm
 5015 Enterprise Blvd Toledo, OH 43612
 419-729-7010 F# 419-729-7019
www.toledospring.com

Cascadia mirror heated under
 # 563.46007 \$ 325.00



564.14008W Cascadia chrome grill with winter
 , snaps less than \$ 475



Side fairing RH side
 Freightliner
 Cascadia # 564.46339
 Less than \$ 275.00



Nox SENSOR Cummins 2894939
 2=\$ 264.28

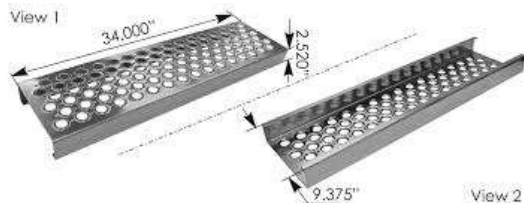


Volvo D12 EGR Valve 21001173RM, 904-5004
 2= \$ 473.74



Driver side window switch
 # 577.46502

Under \$ 20.00



Prices
 start
 under

\$ 100

Look up for correct part number and size.

Note: all prices subject to change,
 Parts numbers are a reference



DPF Pressure Sensor Cummins ISB/ISL/ISX
 2871960
 2= \$ 69.96