

Open Mon-Fri 7am to 10pm

5015 Enterprise Blvd Toledo, OH 43612

419-729-7010 f# 419-729-7019

www.toledospring.com

Bulk buy program affective Nov 26, 2018 prices subject to change based on manufactures pricing.

Free delivery within 60 miles! All other orders prepaid when over \$ 1500.00

Monroe Shocks



66502	6 for \$ 73.91 ea.
	12for \$ 68.22 ea.
65416	8 for \$ 50.11 ea.
66636	8 for \$ 32.77 ea.
66634	8 for \$ 31.38 ea.
65101	4 for \$ 48.67 ea.
65159	4 for \$ 52.22 ea.

Brake Chambers made in USA



3030 2 year warranty	6 for \$ 38.82ea.
	20 for \$ 35.84 ea.
3030HD 4 year warranty	4 for \$ 55.93ea.
3030lsX long stroke 2 year	4 for \$ 50.62ea.



Piggy backs 3030pk

6=\$ 36.18 ea.

20=\$33.40 ea.

3030kls-HDAheavyduty piggyback

4= \$ 48.29 ea.

Note: all prices subject to change,
Parts numbers are a reference and
are aftermarket parts

Meritor HDATruckPride private label **NEW** shoe kit



4707Q 20K highway	8=\$47.89 ea.
QHV20	32=\$44.31 ea.
4707Q 23K highway	8=\$61.305 ea.
QHV23	32=\$56.70 ea.
4707QH23S lots of stop and go	8=\$ 66.74 ea.
4707QH23S garbage truck	8=\$ 77.28 ea.

SLACK ADJUSTER USA Proline



\$ 55.67 ea. with 6 of part #
801073 Meritor 1-1/2-28-5.5
801074 Meritor1-1/2-28-6.0
1140 Gunite 1-1/2-28-5.5
1141 Gunite 1-1/2-28-6.0
10211HDA Haldex 1-1/2-28-5.5
10212HDA Haldex 1-1/2-28-6 straight
STEMCO

6 year million mile warranty for
highway use.
\$ 77.50 ea. with
6 of part #
MK42100s 1-1/2-
28-5.5"
MK42106s 1-1/2-28-6.0"



Aftermarket NEW Air Dryers



AD9 065225	2=\$ 148.63 ea.
	4=\$ 138.02 ea.
ADIP 065612	2=\$ 150.00 ea.
ADIS 5010134	2=\$ 219.25 ea.
ADSP 065691	2=\$ 224.76 ea.
Wabco 955205	2=\$ 134.81 ea.
Wabco SS1200P	2=\$ 177.16 ea.

Air Dryer Cartridges

950068 coalescing	2=\$ 46.52 ea.
	6=\$ 44.44 ea.
ADIS 5008414	2=\$ 27.12 ea.
ADIP 109493	2=\$ 59.86 ea.
AD9 kit 107796	2=\$ 24.27 ea.

Air Disc Brake Pads



Bendix ADB22 1369H	4=\$ 89.93ea
Wabco pan19 1438H	2=\$100.38ea
Wabco pan17 1518H	2=\$104.41ea
Wabco pan22 1777H	2=\$107.69ea
Meritor Mach program	

AIR VALVES



- 229859 QR valve 3/8 **3=\$ 5.81 ea.**
- 229860 QR valve 1/2 **2=\$ 7.78 ea.**
- 102626 R12 RELAY **2=\$ 24.17 ea.**
- KN31000 PR4 **2=\$ 10.52 ea.**
- 275491 D2 GOV **3=\$ 11.73 ea.**

Meritor Wabco replacement ABS trailer valve



- S4008506020 **2= \$ 118.065 ea.**
- S4005001010 **2= \$ 337.86 ea.**
- S4005001030 **2= \$ 528.10 ea.**
- S4461082060 **2= \$ 304.07 ea.**

ABS SENSOR replacement

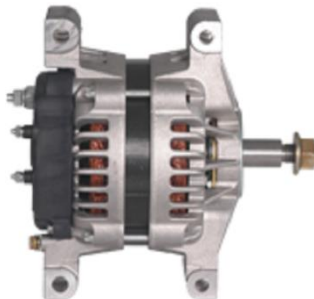


- S4497130180 **2=\$ 9.29 ea.**
- 801544 **2=\$ 20.35 ea.**
- 801545 **2=\$ 52.85 ea.**
- 801546 **2=\$ 50.69 ea.**
- R955329 **2=\$ 19.94 ea.**
- R955336 **2=\$ 22.16 ea.**
- R955337 **2=\$ 22.92 ea.**
- R955341 **2=\$ 25.07 ea.**
- R955342 **2=\$ 25.21 ea.**
- R955349 **2=\$ 19.10 ea.**



NEW 39 MT 11t rotating nose
8200308 6924N **2=\$ 263.67 ea.**

NEW 42MT 11t rotating nose
Many Delco numbers
10461052 6356N **2=\$ 248.08**



NEW 24SI 160 amp 100 at idle
8600310 j-mount 8718 **2=\$161.91 ea.**
8600889 pad mount 8719 **2=\$172.33ea.**

Call for pricing anytime between
7am and 10pm M-F for 28Si, 35Si,
36Si and 40Si all in stock one at a
time. Tell them you want BEST
price and that Brad said so!!!!



EA4722000401 Detroit diesel DD13 & DD15
US0401 **2= \$ 78.21 ea.**

85142304 85124621
D11,D13,D16 US2304 **2= \$ 117.84**

ISX 4089910 368449
US6344 **2=\$ 294.00 ea.**



TIMKEN bearing sets

- FFTC1 Set427/428w/spacer **2=\$101.89**
- FFTC2 Set603/605w/spacer **2=\$108.25**
- FLTC1 Set445/446w/spacer **2=\$198.85**
- SET401 580/572 **4=\$ 38.80 ea.**
- SET402 582-572 **4=\$ 43.68 ea.**
- SET403 594A/592A **4=\$ 46.14 ea.**
- SET406 3782/3720 **4=\$ 21.79ea.**
- SET413 049/011 **4=\$ 21.72 ea.**
8=\$ 29.54 ea.
- SET414 248/210 **4=\$ 47.75 ea.**
8=\$ 44.47 ea.
- SET415 445/410 **4=\$ 54.66 ea.**
8=\$50.90 ea.
- SET423 6461a/6420 **4=\$104.42ea.**
- SET424 5558/552a **4=\$ 53.21 ea.**
- SET425 567/563 **4=\$ 49.71 ea.**
- SET426 47679/47620 **4=\$54.34 ea.**



Stemco seals

- 383-0136 **6=\$ 29.80 ea.**
- 393-0173 **6=\$ 39.96 ea.**
- 373-0143 **6=\$ 28.67 ea.**
- 383-0164 **6=\$ 39.41 ea.**
- 373-0123 **6=\$ 28.81 ea.**
- 372-7097 **6=\$ 32.44 ea.**
- 392-9131 **6=\$ 42.06 ea.**
- 382-8036 **6=\$ 34.90 ea.**
- 393-0112 **6=\$ 36.22 ea.**

Note: all prices subject to change, all prices shown as each. Part numbers are a reference and are aftermarket parts.

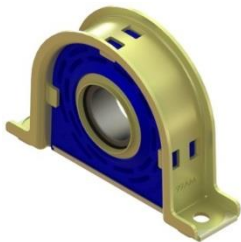
Stemco Hub Cap



300-4009 hub cap 6=\$ 9.09 ea.
 25=\$ 8.07 ea.
 300-4024 hub cap 6=\$ 16.30 ea.
 340-4195 hub cap 6=\$ 22.98 ea.
 359-5990 plug 10=\$ 2.91 ea.
 359-5915 red plug 10=\$ 2.91 ea.



Stemco Pro-torq spindle nut
 447-4723 4=\$ 45.09 ea.
 447-4743 4=\$ 35.46 ea.
 448-4836 4=\$ 33.18 ea.
 448-4837 4=\$ 33.57 ea.
 448-4839 4=\$ 37.64 ea.
 448-4865 4=\$ 39.11 ea.
 449-4904 4=\$ 39.98 ea.
 449-4973 4=\$ 39.31 ea.
 449-4975 4=\$ 39.31 ea.



Center support Carrier bearing
 Timken OEM rubber
 #1 seller 210661x 500332
 HB88512AHD 2= \$ 61.70ea.

ATRO polyurethane 210661x 500332
 CR00-67825 2=\$ 71.25 ea.

GAFF Easy mount polyurethane
 40197 210661x 500332 2= \$ 70.52 ea.



Tramec Sloan top of the line
 power and air lines made in USA
 451275 13.5' 3=\$ 175.00 ea.

Imported # 179.3012.12 3=\$128.48 ea.



GROTE air lines
 -40F to 220F premium
 81-0015 15' w/12" leads 3=\$ 45.61 ea.
 81-0015-40 w/40"lead 3=\$ 53.72 ea.



Tramec Sloan Maxxgrip Gladhands
 Drivers love them, easy to grip and less
 issues with airlines.
 441226 Blue 3 = \$ 12.25 ea.
 441227 Red 3 = \$ 12.25 ea.



Traditional glad hand by Grote
 81-0001-B Blue 3 = \$ 3.59 ea.
 81-0001-R Red 3= \$ 3.59 ea.

**Note: all prices subject to change,
 Parts numbers are a reference and
 are aftermarket parts.**



Drain w/cable 032082, 401046,
 177.4010 # 12-5300 4=\$ 4.31 ea.



Flanged cap nut E6000A, W1338,
 179933, M-3203, W498, K169187,
 R006000A, 50004718611,
 1617829C1, 106333, WN6000,
 333B,
 # 201.3014 40= \$ 1.37 ea.
 120= \$ 1.19 ea.



Stemco Kaiser No Ream King Pins
 The 70's kits are a brass no ream bushing
 that needs to be pressed in, the K kit is a
 spiral bushing, listed are the same
 application

70.122.05	\$ 259.30
K122E	\$ 339.93
70.147.05	\$ 209.93
K147E	\$ 424.32
70.931.12	\$ 190.96
K931L	\$ 366.65
78.931.12	\$ 298.81
KH931L	\$ 440.54
70.961.12	\$ 223.31
K961L	\$ 380.43
70.120.09	\$ 291.34
K120H	\$ 310.38
70.616.13	\$ 253.90
K616M	\$ 323.14



Stemco qwiktie rod assembly
 QT108SB 16/20K uses ES431R&L
2=\$ 210.37 ea.
 QT967SS 12K uses ES423R&L
2=\$ 207.82 ea.



Deka East Penn group 31
 No warranties in the last 8 years
 VL31 650cca **6=\$ 79.93 ea.**
 1131MF 950cca **6=\$ 96.68 ea.**
 DP31CS deep cycle **6=\$ 100.65 ea.**



Grote
 82-1000 junction box **3=\$8.60ea.**
 82-1001 trailer plug **3=\$6.80ea.**
 82-1002 splitpin sckt **3=\$8.11ea.**
 82-1019 tra/plug w/guard **3=\$7.25ea.**



Grote Zip ties
 83-6019 7.6" 50lbs **200=\$.033ea.**
 83-6021 11" 50lbs **200=\$.047ea.**
 83-6025 14.6" 50lbs **200=\$.066ea.**
 83-6029 15" 120lbs **200=\$.124ea**



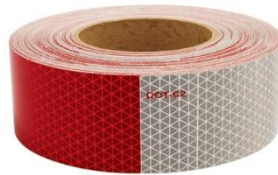
83-7029 electrical **10=\$1.38ea.**



Grote Master disconnect switch
 82-2103 **3=\$ 23.32 ea.**



4" stop tail turn LED lights
 Grote G4002 **10=\$ 15.29 ea.**
 52922 reg 4" **10=\$ 3.03 ea.**
 Maxxima M42346R 4"round 6 LED
10=\$ 8.08 ea.
30=\$ 7.00 ea.



Orafol/ Reflexight 7"white/11"red 150'
 19160 3 year **2=\$ 57.41**
 18806 5 year **2=\$ 67.63**
 18379 2"x12" solid white **100=\$.49 ea.**



Energizer Industrial
 EN22 9V **24=\$ 1.80 ea.**
 EN91 AA **48=\$.45 ea.**
 EN92 AAA **48=\$.45 ea.**
 EN93 C's **24=\$.87 ea.**
 EN95 D's **24=\$ 1.36 ea.**

**Note: all prices subject to change,
 Parts numbers are a reference and
 are aftermarket parts.**



Trailer springs

TRA013 4= \$ 75.06 ea.
 TRA035 4= \$ 62.94
 TRA038 4= \$ 76.60
 TRA699 4= \$ 91.22
 TRA2726 4= \$ 68.92
 TRA2727 4= \$ 68.92
 TRA2728 4= \$ 68.92



Tarps strap box of 50 prices by ea.

9" \$.61
 15" \$.75
 21" \$.79
 31" \$ 1.14
 15"epdm \$.87



All steel frame blade ss rivets
 16" to 24" **10= \$ 2.43 ea.**



All season blades
 91221 22" **10= \$ 6.96 ea.**
 91241 24" **10= \$ 6.96 ea.**

Winter blades
 76221 22" **10= \$ 5.15 ea.**



Grote G3002 2"rd LED 6=\$ 5.83ea.

G3003 yellow \$\$ same as above

Grote G1032 2-1/2 LED 6=\$5.77ea.

G1033 yellow same \$\$ as above



M50911 straight 50=\$1.24 ea.

M50900 right angle 90 50=\$ 1.38 ea.



Eiko 9004 4=\$ 2.36 ea.

9005 4=\$ 2.29 ea.

9005XSLL 4=\$ 6.76 ea.

9006 4=\$ 2.29 ea.

9006XSLL 4=\$ 6.76 ea.

9007 4=\$ 3.10 ea.

H1155-BP 4=\$ 6.24 ea.

H4651 4=\$ 8.56 ea.

H4656 4=\$ 7.29 ea.

H5006 4=\$ 8.65 ea.

H6024 4=\$ 10.47 ea.

H6054 4=\$ 8.65 ea.

H9411 4=\$ 15.33 ea.



DOT Inspection for 1-CPS 100=\$.43ea.

Annual label 1-CSP 100=\$.69 ea.

Over 700 parts and 500 service locations



PB Blaster Air & Tool cond & lube 16-ATC 6=\$ 4.43ea.

Air tool lube 6=\$ 3.63 ea.

Garage door lube 16-GDL 6=\$ 3.89

PB Blaster 16-PB 12=\$ 4.35 ea

24=\$ 3.92 ea.



Penray Brake Clean

Non-chlo 14oz 4620 36=\$ 2.78 ea.

60=\$ 2.59 ea.

#4820 CHROR 36=\$ 4.00 ea.

60=\$ 3.74 ea.



Shark made in USA roloc disc 3" course brown

13006 30=\$ 1.84 ea.

3" medium burgundy # 13020

50=\$ 1.32 ea.

2" course brown 13062 50=\$.72 ea.



6" cut off wheel type 1 7/8 ar

13031 2=\$ 53.34 ea.

3" 54gr 1/16 3/8 #13215

50=\$ 1.32ea

100= \$ 1.23 ea.

3" 54gr 1/32 3/8 # 13216

50=\$ 1.32 ea. 100=\$ 1.23 ea

Note: all prices subject to change, Parts numbers are a reference and are aftermarket parts.



Where ever the road takes you...we are there!



Torca 4" E40ST 10=\$ 6.52ea.

E50ST 10=\$ 6.95 ea.



Nitrile gloves seav900pf

Large 10=\$ 5.93 ea.

XL 10=\$ 6.25 ea.



Permatex products

5th wheel lub #01010 60=\$.87 ea.

Xtreme laundry soap #22340 2=\$13.12

Fast orange 1gal 23218 4=\$12.88

Ultra black max 24105 6=\$15.35

Medium strnth thre 24240 2=\$18.75

Spray nine 26825 2=\$4.11 ea.

Nickel anti-seize 77124 3=\$19.66 ea.

Anti-seize 80078 2=\$6.52 ea.

Spray lube 80070 2=\$3.43

Thread sealant 80631 2=\$3.07

" " 80632 12=\$5.23ea.

Dielectric 81150 6=\$2.55 ea.

Black RTV 81158 6=3.03 ea.

Blk rtv tube 81173 12=\$10.77ea

Hi temp red 81160 12=\$3.62

Ultra grey rigid 82195 6=\$16.13

85080 ultrablk power 6=\$19.02ea

Dayton Parts
PROVEN PERFORMANCE
MILE AFTER MILE

- ✔ Designs tested to assure premium life expectancy
- ✔ 13% higher burst pressure, double fatigue life of closest aftermarket competitor
- ✔ 100% leak tested
- ✔ Available in rolling and convoluted designs for all major truck, trailer, and auxiliary axle applications
- ✔ Packaged to protect during transit and storage
- ✔ Part numbers molded in bellows for easy identification
- ✔ Performance Proven and backed by a 3-Year, 300,000 mile warranty

Branded AIR SPRINGS
www.daytonparts.com

The part number is stamped on the bag!

Order 4 or more air springs to get these prices.

The L stands for long life 3 years warranty

452-1191L = 1R12-432, 9875	\$ 107.62
452-5423L = 8559	\$ 119.22
452-8050L = 1R14-039, 8320	\$ 116.50
452-8709L = 1R13-159, 8453	\$ 96.70
452-8774L = 1R14-172, 8745	\$ 136.34
452-9069L = 1R12-069, 8312	\$ 85.18
452-9265L = 1R12-375, 8435, S20124	\$ 105.47
452-9367L = 1R12-256, 8505	\$ 120.68
452-9375L = 1R12-404, 8451	\$ 122.32
452-9781L = 1R12-603, 8382	\$ 107.73
455-46647L = 1R12-647, 81153	\$ 114.47
454-8033L = 3B13-312, 4525	\$ 108.05
454-6897L = 2B9-229, 4505	\$ 73.50



Holset Cummins ISX, HE561VE Complete 15.0L 2007-2013,

Remanufactured Turbocharger #RHH3767618

2= \$ 3105.89 exch.

New actuator 4034289hx

2= \$ 1275.65 exch.



Intraax camshaft hardware kit 16-1/2" HSX

OE design w/nylon bushing # 110.2505 = S26348, S28890, R615025, E11897 B8805
6 = \$ 19.68 ea.

HD with bronze bushings for longer wear 110.2505HD
6 = \$ 25.74 ea.

XHD Longer sintered metal bushings for wider bearing surface and knurled cam tube ends for better grip on worn spiders, 110.2505XHD
6 = \$ 28.77 ea.



Horton 9908503 Klondike 30 New Clutch Head

Rear Air Klondike, Kysor/BorgWarner Fan Clutch. Ford, IH/Navistar, Volvo, Mack, Freightliner,

Western Star.

Buy 2 = \$ 335.95 ea.

Note: all prices subject to change, Parts numbers are a reference and are aftermarket parts.