

Open Mon-Fri 7am to 10pm

5015 Enterprise Blvd Toledo, OH 43612

419-729-7010 f# 419-729-7019

www.toledospring.com

Bulk buy program affective Nov 26, 2018 prices subject to change based on manufactures pricing.

Free delivery within 60 miles! All other orders prepaid when over \$ 1500.00

Monroe Shocks



66502	4 for \$ 70.87 ea.
65416	8 for \$ 49.74 ea.
66636	8 for \$ 30.15 ea.
66634	8 for \$ 30.65 ea.
65101	4 for \$ 49.20 ea.
65159	4 for \$ 52.93 ea.

Brake Chambers made in USA



3030 2 year warranty 6 for \$ 35.99ea.
3030HD 4 year warranty 4 for \$ 55.00ea.
3030LSX long stroke 2 year 4 for \$ 51.99ea.



Piggy backs 3030pk
8=\$ 34.99 ea.

Note: all prices subject to change, Parts numbers are a reference and are aftermarket parts with a one year coast to coast warranty!

Meritor HDATruckPride private label **NEW** shoe kit



4707Q 20K highway	8=\$40.00 ea.
	32=\$37.50 ea.
4707Q 23K highway	8=\$50.75 ea.
	32=\$47.50 ea.
4707q23 lots of stop and go	8=\$ 56.00 ea.
4707q23 garbage truck	8=\$ 64.00 ea.

SLACK ADJUSTER USA Proline



\$ 51.45 ea. with 6 of part #
801073 Meritor 1-1/2-28-5.5
801074 Meritor 1-1/2-28-6.0
1140 Gunitite 1-1/2-28-5.5
1141 Gunitite 1-1/2-28-6.0
10211 Haldex 1-1/2-28-5.5
10212 Haldex 1-1/2-28-6 straight



STEMCO
6 year million mile warranty for highway use.

\$ 77.29 ea. with 6 of part #
MK42100s 1-1/2-28-5.5"
MK42106s 1-1/2-28-6.0"

Aftermarket NEW Air Dryers



AD9 065225	2=\$ 143.64 ea.
ADIP 065612	2=\$ 143.64 ea.
ADIS 5010134	2=\$ 208.78 ea.
ADSP 065691	2=\$ 243.61 ea.
Wabco 955205	2=\$ 121.92 ea.
Wabco SS1200P	2=\$ 176.71 ea.

Air Dryer Cartridges

950068 coalescing	2=\$ 47.00 ea.
	6=\$ 44.75 ea.
ADIS 5008414	2=\$ 29.50 ea.
ADIP 109493	2=\$ 66.50 ea.
AD9 kit 107796	2=\$ 27.50 ea.

Air Disc Brake Pads



Bendix ADB22 1369H	4=\$ 89.99ea
Wabco pan19 1438H	2=\$ 87.17ea
Wabco pan17 1518H	2=\$ 87.17ea
Wabco pan22 1777H	2=\$ 91.29ea

Meritor **Mach** program
AIR VALVES



229859 QR valve 3/8 3=\$ 5.25 ea.
 229860 QR valve 1/2 2=\$ 7.13 ea.
 102626 R12 RELAY 2=\$ 23.75 ea.
 KN31000 PR4 2=\$ 10.31ea.
 275491 D2 GOV 3=\$ 10.75 ea.

Meritor Wabco replacement ABS trailer valve



S4008506020 2= \$ 130.05 ea.
 S4005001010 2= \$ 365.79 ea.
 S4005001030 2= \$ 569.73 ea.
 S4461082060 2= \$ 325.14 ea.

ABS SENSOR replacement

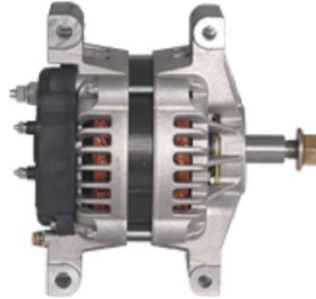


S4497130180 2=\$ 18.49 ea.
 801544 2=\$ 20.41 ea.
 801545 2=\$ 54.27 ea.
 801546 2=\$ 53.28 ea.
 R955329 2=\$ 20.79 ea.
 R955336 2=\$ 22.86 ea.
 R955337 2=\$ 22.95 ea.
 R955341 2=\$ 24.81 ea.
 R955342 2=\$ 26.25 ea.
 R955349 2=\$ 19.84 ea.
 R955458 2=\$ 3.35 ea.



NEW 39 MT 11t rotating nose
 8200308 6924N 2=\$ 268.93 ea.

NEW 42MT 11t rotating nose
 Many Delco numbers
 10461052 6356N 2=\$ 288.68



NEW 24SI 160 amp 100 at idle
 8600310 j-mount 8718 2=\$172.02 ea.
 8600889 pad mount 8719 2=\$172.02ea.

Call for pricing anytime between 7am and 10pm M-F for 28Si, 35Si, 36Si and 40Si all in stock one at a time. Tell them you want BEST price and that Brad said so!!!!



EA4722000401 Detroit diesel DD13 & DD15
 US0401 2 = \$ 79.32 ea.

85142304 85124621
 D11,D13,D16 US2304 2= \$ 122.46

ISX 4089910 368449
 US6344 2=\$ 305.60 ea.



TIMKEN bearing sets

FFTC1 Set427/428w/spacer 2=\$ 93.66
 FFTC2 Set603/605w/spacer 2=\$ 97.94
 FLTC1 Set445/446w/spacer 2=\$173.17
 SET401 580/572 4=\$ 36.11 ea.
 SET402 582-572 4=\$ 40.67 ea.
 SET403 594A/592A 4=\$ 42.96 ea.
 SET406 3782/3720 4=\$ 20.37ea.
 SET413 049/011 4=\$ 29.56 ea.
 SET414 248/210 4=\$ 43.96 ea.
 SET415 445/410 4=\$ 50.90 ea.
 SET423 6461a/6420 4=\$ 98.23 ea.
 SET424 5558/552a 4=\$ 49.55 ea.
 SET425 567/563 4=\$ 46.28 ea.
 SET426 47679/47620 4=\$51.60ea.



Stemco seals

383-0136 6=\$ 27.97 ea.
 393-0173 6=\$ 37.97 ea.
 373-0143 6=\$ 27.85 ea.
 383-0164 6=\$ 37.97 ea.
 373-0123 6=\$ 27.85 ea.
 372-7097 6=\$ 30.97 ea.
 392-9131 6=\$ 40.97 ea.
 382-8036 6=\$ 33.97 ea.
 393-0112 6=\$ 35.97 ea.

Note: all prices subject to change, all prices shown as each. Part numbers are a reference and are aftermarket parts with a one year coast to coast warranty!

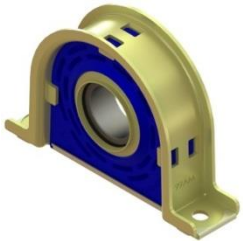
Stemco Hub Cap



300-4009 hub cap 6=**\$ 8.59 ea.**
 300-4024 hub cap 6=**\$ 15.31 ea.**
 340-4195 hub cap 6=**\$ 21.21 ea.**
 359-5990 plug 10=**\$ 2.73 ea.**
 359-5915 red plug 10=**\$ 2.73 ea.**



Stemco Pro-torq spindle nut
 447-4723 4=**\$ 42.77 ea.**
 447-4743 4=**\$ 34.00 ea.**
 448-4836 4=**\$ 32.31 ea.**
 448-4837 4=**\$ 33.12 ea.**
 448-4839 4=**\$ 37.14 ea.**
 448-4865 4=**\$38.59 ea.**
 449-4904 4=**\$39.44 ea.**
 449-4973 4=**\$37.73 ea.**
 449-4975 4=**\$ 38.79 ea.**



Center support Carrier bearing
 Timken OEM rubber
 #1 seller 210661x 500332
 HB88512AHD 2= **\$ 59.63ea.**
 HB88508E 210391X 2= **\$ 35.41ea.**
 HB88510 210121X 2= **\$ 52.83ea.**

ATRO polyurethane
 CR00-67825 210661x 500332 2=**\$ 69.78ea.**

GAFF Easy mount polyurethane
 40197 210661x 500332 2= **\$ 65.43 ea.**



Tramec Sloan top of the line
 power and air lines made in USA
 451275 13.5' 3=**\$ 175.00 ea.**

Imported # 179.3012.12 3=**\$135.00ea.**



GROTE air lines -40C to 220F
 81-0015 15' w/12" leads 3=**\$43.75 ea.**
 81-0015-40 w/40"lead 3=**\$37.00 ea.**



Tramec Sloan Maxxgrip Gladhands
 Drivers love them, easy to grip and less
 issues with airlines.
 441226 Blue 3 = **\$ 10.83**
 441227 Red 3 = **\$ 10.83**



Traditional glad hand by Grote
 81-0001-B Blue 3 = **\$ 3.50 ea.**
 81-0001-R Red 3= **\$ 3.50 ea.**



Drain w/cable 032082, 401046,
 177.4010 # 12-5300 4=**\$ 4.19 ea.**



Flanged cap nut E6000A, W1338,
 179933, M-3203, W498, K169187,
 R006000A, 50004718611,
 1617829C1, 106333, WN6000,
 333B,
 # 201.3014 40= **\$ 1.35 ea.**
 120= **\$ 1.19 ea.**



Stemco Kaiser No Ream King Pins
 The 70's kits are a brass no ream bushing
 that needs to be pressed in, the K kit is a
 spiral bushing, listed are the same
 application

70.122.05	\$ 259.30
K122E	\$ 339.93
70.147.05	\$ 209.93
K147E	\$ 424.32
70.931.12	\$ 190.96
K931L	\$ 366.65
78.931.12	\$ 298.81
KH931L	\$ 440.54
70.961.12	\$ 223.31
K961L	\$ 380.43
70.120.09	\$ 291.34
K120H	\$ 310.38
70.616.13	\$ 253.90
K616M	\$ 323.14



Stemco qwiktie rod assembly
 QT108SB 16/20K uses ES431R&L
2=\$ 197.99 ea.
 QTE967SS 12K uses ES423R&L
2=\$ 195.60 ea.



Deka East Penn group 31
 VL31 650cca **6=\$ 74.42**
 1131MF 950cca **6=\$ 90.83**
 DP31CS deep cycle **6=\$ 96.22**



Grote
 82-1000 junction box **4=\$8.63ea.**
 82-1001 trailer plug **3=\$6.03ea.**
 82-1002 splitpin sckt **4=\$7.14ea.**
 82-1019 tra/plug w/guard **4=\$6.15ea.**



Grote Zip ties
 83-6019 7.6" 50lbs **300=\$.321ea.**
 83-6021 11" 50lbs **300=\$.389ea.**
 83-6025 14.6" 50lbs **300=\$.635ea.**
 83-6029 15" 120lbs **300=\$1.23ea**



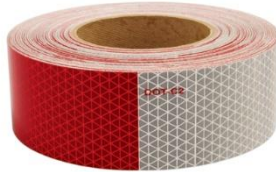
83-7029 electrical **10=\$1.06ea.**



Grote Master disconnect switch
 82-2103 **3=\$ 22.71 ea.**



4" stop tail turn LED lights
 Grote G4002 **10=\$ 13.75 ea.**
 52922 reg 4" **10=\$ 2.75 ea.**
 Maxxima M42346R 4" round 6 LED
10=\$ 7.50 ea.
25=\$ 6.50 ea.



Orafol/ Reflexight 7"white/11"red 150'
 19160 3 year **2=\$ 57.81**
 18806 5 year **2=\$ 67.63**
 18379 2"x12" solid white **100=\$.48 ea.**



Energizer Industrial
 EN22 9V **24=\$ 1.69 ea.**
 EN91 AA **48=\$.43 ea.**
 EN92 AAA **48=\$.43 ea.**
 EN93 C's **24=\$.89 ea.**
 EN95 D's **24=\$ 1.35 ea.**

Note: all prices subject to change, Parts numbers are a reference and are aftermarket parts with a one year coast to coast warranty!



Trailer springs

TRA013 **4=\$ 76.07 ea.**
 TRA035 **4=\$ 63.56 ea.**
 TRA038 **4=\$ 71.12 ea.**
 TRA699 **4=\$ 89.12 ea.**
 TRA2726 **4=\$ 68.64 ea.**
 TRA2727 **4=\$ 68.64 ea.**
 TRA2728 **4=\$ 68.64 ea.**



Tarp Straps box of 50 prices by ea.
 9" **\$.62**
 21" **\$.81**
 31" **\$ 1.12**
 41" **\$ 1.65**
 15" EPDM **\$.89**



The original steel frame wiper blade, They come in a box of 5
 16" **20= \$ 2.35 ea.**
 18" **20= \$ 2.35 ea.**
 20" **20= \$ 2.35 ea.**
 22" **20= \$ 2.35 ea.**
 24" **20= \$ 2.35 ea.**



Intellicurve all season wiper blade
 91181 18" **10= \$ 6.25 ea.**
 91201 20" **10= \$ 6.25 ea.**
 91221 22" **10= \$ 7.25 ea.**
 91241 24" **10= \$ 7.25 ea.**



Grote G3002 2"rd LED 6=\$ 5.25ea.
12= \$ 4.85ea.

G3003 yellow \$\$ same as above

Grote G1032 2-1/2 LED 6=\$5.25ea.
12=\$4.85ea.

G1033 yellow same \$\$ as above



67000 or Maxxima m50911
50=\$1.25 ea.



Eiko
9004 4=\$ 1.79 ea.
9005 4=\$ 1.99 ea.
9005XSLL 4=\$ 2.10 ea.
9006 4=\$ 2.19 ea.
9006XSLL 4=\$ 3.99 ea.
9007 4=\$ 2.39 ea.
H1155-BP 4=\$ 5.46 ea.
H4651 4=\$ 6.75 ea.
H4656 4=\$ 6.39 ea.
H5006 4=\$ 5.89 ea.
H6024 4=\$ 7.59 ea.
H9411 4=\$ 9.25 ea.



DOT Inspection for 1-CPS 75=\$.43ea.
Annual label 1-CSP 100=\$.70ea.

Over 700 parts and 500 service locations



PB Blaster Air & Tool cond & lube
16-ATC 6=\$ 2.11ea.

Air tool lube \$ 6=\$ 2.99 ea.

Garage door lube 16-GDL 6=\$ 1.78

PB Blaster 16-PB 12=\$ 4.29 ea
24=\$ 3.99 ea.



Penray Brake Clean
Non-chlo 14oz 4620 36=\$ 2.50 ea.
60=\$ 2.33 ea.
#4820 CHROR 36=\$ 3.85 ea.
60=\$ 3.45 ea.



Shark made in USA roloc disc
3" course brown
13006 20=2.03 ea.
40= 1.83 ea.
3" medium burgundy # 13020
50=\$ 1.39 ea
2" course brown 13062 50=\$.70 ea.

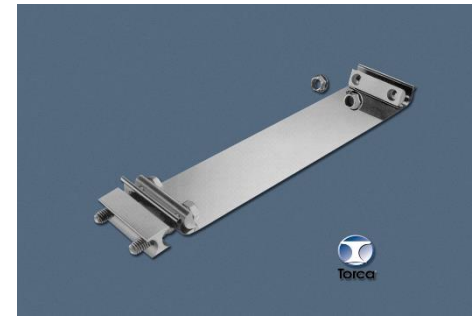


6" cut off wheel type 1 7/8 ar
13031 2=\$ 57.25 ea.
3" 54gr 1/16 3/8 #13215
25=\$ 1.29ea
100= \$ 1.19 ea.

3" 54gr 1/32 3/8 # 13216
25=\$ 1.29 ea. 100=\$ 1.22 ea



Where ever the road takes you...we are there!



Torca 4" E40ST 10=\$ 5.79ea.
E50ST 10=\$ 6.83 ea.



Nitrile gloves seav900pf
Large 4=\$6.25 10=\$ 6.25 ea.
XL 4=\$7.25 10=\$ 6.49 ea.



Permatex
products

5th wheel lub #01010 60=\$.81 ea.
Xtreme laundry soap #22340 2=\$12.50
Fast orange 1gal 23218 4=\$12.23
Ultra black max 24105 6=\$7.80ea
Medium strnth thre 24240 2=\$9.41ea
Spray nine 26825 2=\$1.96ea.
Nickel anti-seize 77124 4=\$20.75 ea.
Anti-seize 80078 2=\$6.34 ea.
Spray lube 80070 2=\$2.99
Thread sealant 80631 2=\$1.46ea.
" " 80632 2=\$26.2ea.
Dielectric 81150 2=\$2.75 ea.
Black RTV 81158 3=1.42 ea.
Blk rtv tube 81173 3=\$11.25ea
Hi temp red 81160 3=\$3.75
Ultra grey rigid 82195 3=\$17.45
85080 3=\$17.79ea



Parts & Service
Mon - Fri 7AM- 10PM



P:419-729-7010 - P:800-283-9922 - F: 419-729-7019
5015 Enterprise Blvd. Toledo, OH 43612



The part number is on the bag

Order 3 or more and get the
price shown, prices subject to change

November 1, 2018

	Goodyear/ triangle #			Goodyear/ triangle #	
452-0783L	AIR BAG 1R12-467 8830	\$175.44	452-9130L	AIR BAG 8321 1R12-281	\$131.07
452-1191L	AIR BAG 1R12-432 9875	\$110.40	452-9192L	AIR BAG 1R12-185 8326	\$133.60
452-5423L	AIR BAG 8559	\$120.61	452-9219L	AIR BAG 8408 1R12-182	\$107.35
452-8050L	AIR BAG 8320 1R14-039	\$119.52	452-9243L	AIR BAG 8384 1R12-480	\$136.48
452-8091L	AIR BAG 8523 1R14-171	\$117.75	452-9265L	AIR BAG 8435 1R12-375	\$109.77
452-8204L	AIR BAG 8484 1R12-508	\$83.29	452-9270L	AIR BAG 1R13-119 8433	\$101.93
452-8539L	AIR BAG 8273	\$141.64	452-9296L	AIR BAG 8416 1R12-400	\$131.97
452-8709L	AIR BAG 1R13-159 8453	\$99.20	452-9321L	AIR BAG 8482 1R12-435	\$131.51
452-8713L	AIR BAG 1R13-176 8533	\$112.42	452-9367L	AIR BAG 8505 1R12-256	\$122.06
452-8729L	AIR BAG 8513 1R13-130	\$123.93	452-9370L	AIR BAG 8448 1R12-580	\$116.44
452-8749L	AIR BAG 1R13-153 8486	\$135.70	452-9373L	AIR BAG 8519 1R12-403	\$122.28
452-8774L	AIR BAG 8745 1R14-172	\$138.44	452-9375L	AIR BAG 1R12-404 8451	\$125.84
452-8852L	AIR BAG 1R12-568 8472	\$107.10	452-9466L	AIR BAG 8410 1R12-365	\$128.72
452-8864L	AIR BAG 8898	\$154.77	452-9580L	AIR BAG 8434 1R13-118	\$124.57
452-8944L	AIR BAG 1R12-366 8436	\$119.97	452-9616L	AIR BAG 8515 1R11-242	\$94.84
452-9026L	AIR BAG 8393 1R12-567	\$123.86	452-9644L	AIR BAG 8569	\$139.02
452-9069L	AIR BAG 1R12-069 8312	\$87.40	452-9645L	AIR BAG 8565	\$168.63
452-9082L	AIR BAG 1R12-092 8310	\$104.18	452-9648L	AIR BAG 8456 1R12-538	\$107.09
452-9101L	AIR BAG 8315 1R12-103	\$113.60	452-9781L	AIR BAG 8382 1R12-603	\$110.52
452-9122L	AIR BAG 8313 1R13-038	\$127.82	455-45647L	AIR BAG 81153 1R12-647	\$110.92

The L stands for long-life,
3 year 300,000 mile warranty, 13% higher burst pressure.

Over 700 parts and 500 service locations



Where ever the road takes you...we are there!